

MARK II BELT PRESS

MKII 500, 1000, 1500 SERIES

If you're looking for an economical and simple solution to your sludge dewatering needs, you'll find the answer in the MKII Belt Press. Designed with ease of operation, low maintenance, cost effectiveness, and dewatering efficiency in mind, the MKII is a leader in the municipal, industrial, food processing and agricultural industries. Its compact frame is constructed of stainless steel and can be installed into a trailer for operation across multiple sites.

- Simple & Easy to Operate
- Stainless Steel Construction
- Exceptionally Dry Cake
- Easy to Maintain
- Auto Start-Up, Run, and Shutdown
- Automatic Belt Tracking
- Sludge Cake Monitoring System



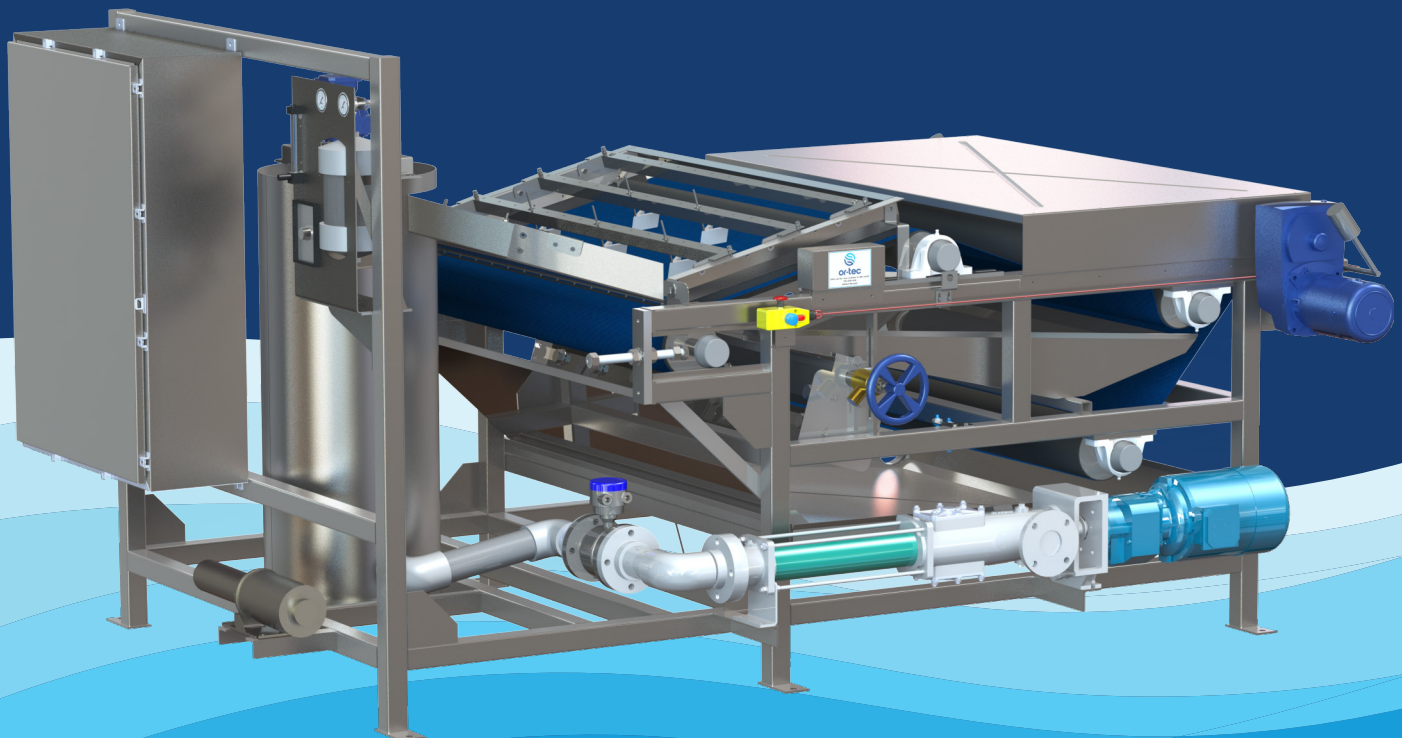
**EASY TO INSTALL
& OPERATE**



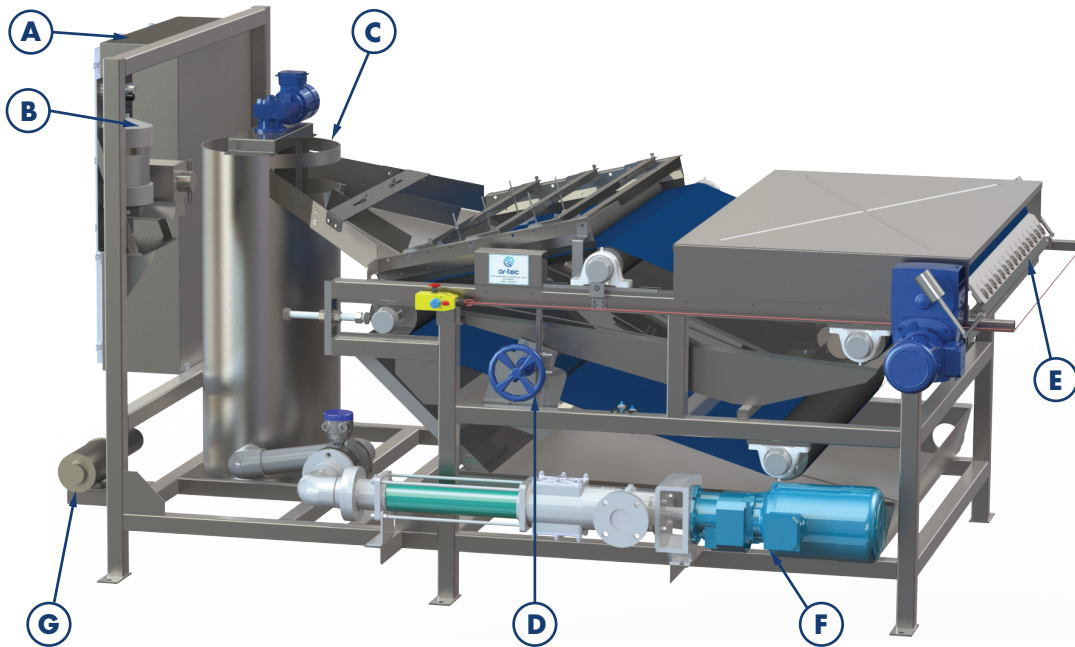
**LOW
MAINTENANCE**



**DRY SLUDGE
CAKE**



DON'T DEWATER IT, PRESS IT



- A - Control Panel
- B - Polymer Dosing
- C - Flocculation Zone
- D - Belt Wash Station
- E - Sludge Cake Discharge
- F - Sludge Pump
- G - Washwater Pump

Type of Sludge	Feed Sludge Conc %	Dry Solids Feed Rate 1lb/HR	Sludge Feed Rate GPH	Poly Conc %	Poly Feed Rate lbs/Ton d.s.	Feed Sludge Conc %
Activated Sludge from Municipal WWTP	1.5	105 (0.5m) 210 (1.0m) 315 (1.5m)	844 (0.5m) 1687 (1.0m) 2530 (1.5m)	0.25	8-10	14.5 Plus %
Activated Sludge from Anarobic WWTP	3.6	138 (0.5m) 276 (1.0m) 414 (1.5m)	462 (0.5m) 923 (1.0m) 1385 (1.5m)	0.25	8-12	19 Plus %
Primary and Secondary Activated Sludge from Municipal WWTP	3.25	161 (0.5m) 321 (1.0m) 481 (1.5m)	595 (0.5m) 1189 (1.0m) 1783 (1.5m)	0.25	8-10	22.5%
Tannery Sludge	2.4	79 (0.5m) 158 (1.0m) 237 (1.5m)	396 (0.5m) 792 (1.0m) 1190 (1.5m)	0.17	4-8	18%
Flotation Skimmings	8.2	209 (0.5m) 418 (1.0m) 627 (1.5m)	306 (0.5m) 613 (1.0m) 921 (1.5m)	0.20	10-12	30%
Oil and Grease Sludge	3	249 (0.5m) 498 (1.0m) 747 (1.5m)	999 (0.5m) 1997 (1.0m) 3000 (1.5m)	0.20	8-10	36%

Listed capacities are for reference only, contact Or-Tec for specific application information.